



**Company profile**

# Company profile

## 1| Background and current activities

Silos Córdoba starts its activities in 1975 with the aim of fulfilling the needs of the stockbreeding market through grazing and storage solutions.

### International Expansion

Over the past 20 years, the company has experienced a steady international expansion and we now have local distributors around the world, and we export our products to over 45 countries in 4 continents.

### Wider range of products and services

Today, we also offer a wider range of products and services worldwide:

- ✓ Conception, planning, design and assembly of turnkey projects for the storage of grain.
- ✓ Manufacturing of silos.
- ✓ Manufacturing of grain conveying and handling systems.
- ✓ Manufacturing of metal structures and claddings.

**Silos Córdoba, with over 40 years of experience in manufacturing metal silos for grain storage and transportation machinery, has long been recognized as a global leader in its field.** Embarking on a new chapter in collaboration with SCG Silos Grupo, our company is committed to positioning itself among the top players in the metallic silo sector.

Following the cessation of operations of Silos Córdoba S.L. in February 2023, SCG has acquired the complete intellectual property of the company including engineering designs and the brand name, and other pertinent assets to revitalize the brand and re-enter the silo market.

SCG Silos Grupo is part of a prestigious Dubai-based company, a dynamic group with a diverse range of skills and experience. SCG has a specialized team capable of meeting your needs, no matter how challenging they may be.

Our team comprises former employees of Silos Córdoba, allowing us to retain the wealth of experience and knowledge accumulated over four decades in the manufacturing of silos and handling equipment.

At SCG Silos Grupo, we are dedicated to upholding the high standards of quality and service that have defined Silos Córdoba for so many years. We offer an extensive selection of grain storage solutions, including flat bottom silos, hopper silos, bulk loading silos, and agricultural silos, as well as complete storage plants and turnkey solutions. With storage facilities in over 45 countries, Silos Córdoba has been assisting clients in planning and addressing their storage needs for over 40 years.

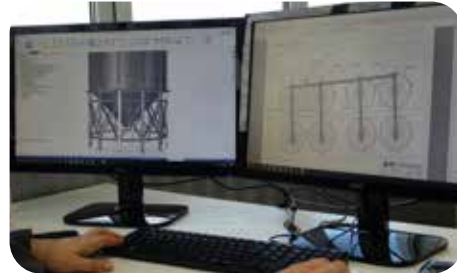
# Company profile

## 2| The way we work

- ✓ We look at the specific needs of each client to develop a **PERSONALIZED SOLUTION**.
- ✓ We have a multidisciplinary team of qualified engineers that are **EXPERTS ON PROJECT DEVELOPMENT**.
- ✓ We have a team of technicians and operators that are **EXPERTS ON FACILITY ASSEMBLY**.
- ✓ We control the materials and monitor all the stages of the development and assembly processes to assure **QUALITY UP TO DELIVERY**.

**Our goal is to meet the needs of our clients** through the use of the most up-to-date technologies, the support of an experienced team and the quality of our materials and processes to:

- ✓ Provide our clients with personalized, high quality and cost-efficient solutions.
- ✓ Meet our clients demands on time.
- ✓ Innovate in product development.





Dear client, please be aware that this reference book just shows a brief summary of our projects. If you wish to get more details about any installation showed here or about any other plant executed by us, do not hesitate to get in contact with us.

More info [www.siloscordoba.com](http://www.siloscordoba.com)

# Reference List

## 2005 | Vitaflora Slovakia

Plant conceived for the storage of wheat and rape.

The total capacity of the plant is 95.700 m<sup>3</sup> for the storage of 72.000 T of cereal.

The project includes:

- ✓ 17 silos model 20.63/15 of 5.906 m<sup>3</sup> capacity each.



## 2005 | Jurex Slovakia

Plant conceived for the storage of wheat and rape.

The total capacity of the plant is 37.083 m<sup>3</sup> for the storage of 27.800 T of cereal.

The project includes:

- ✓ 2 silos model 9.17/8 of 661 m<sup>3</sup> capacity each.
- ✓ 6 silos model 12.22/14 of 2.010 m<sup>3</sup> capacity each.
- ✓ 20 hopper silos model 4.58/7 of 157 m<sup>3</sup> capacity each.
- ✓ 6 silos model 14.51/6 of 3.427 m<sup>3</sup> capacity each.

# Reference List

## 2006 | Agrícola Sumaya Chile

Plant conceived for the receipt, drying, precleaning and storage of wheat and maize.  
The total capacity of the plant is 18.500 m<sup>3</sup> for the storage of 13.875 T of cereal.  
The project includes:

- ✓ 6 silos model 15.28/13 of 2.987 m<sup>3</sup> capacity each.
- ✓ 2 hopper silos of 200 T.
- ✓ It includes a ventilation and temperature monitoring system.



## 2006 | Teal Peru

Execution of turn key project for the storage of wheat.  
The total capacity of the plant is 13.520 m<sup>3</sup> for the storage of 10.140 T of cereal.  
The project includes:

- ✓ 2 silos model 20.63/16 of 6.760 m<sup>3</sup> capacity each.
- ✓ Flow scale.
- ✓ Conveying systems.
- ✓ Electric equipment.
- ✓ Ventilation and temperature monitoring systems.
- ✓ The project also includes the execution and turn key delivery of 5 process conic silos model 6.11/16 of 583 m<sup>3</sup> capacity each.

# Reference List

## 2007 | Spomax Poland

Plant conceived for the storage of wheat.

The total capacity of the plant is 12.890 m<sup>3</sup> for the storage of 10.000 T of cereal.

The project includes:

- ✓ 10 silos model 9.17/15 with 45° cone of 1.289 m<sup>3</sup> capacity each.
- ✓ Catwalks, towers and supports.



## 2008 | Tien Hung Vietnam

Plant conceived for the storage of wheat.

The total capacity of the plant is 8.184 m<sup>3</sup> for the storage of 6.000 T of cereal.

The project includes:

- ✓ 6 silos model 9.17/16 with 45° cone of 1.364 m<sup>3</sup> capacity each.
- ✓ Catwalks and supports.
- ✓ The conveying machinery has been delivered by Silos Cordoba.



# Reference List

## 2009 | Giay Vietnam

Plant conceived for the storage of wheat.

The total capacity of the plant is 10.264 m<sup>3</sup> for the storage of 7.700 T of cereal.

The project includes:

- ✓ 4 silos model 13.75/14 of 10.264 m<sup>3</sup> capacity each.
- ✓ Filling up is done at 100 T/h and unloading is done at 50 T/h.
- ✓ The conveying machinery has been delivered by Silos Cordoba.



## 2009 | Pozo Spain

Animal compound feed manufacturing plant with a production of 15 T/h for meals and 25 T/h for granulation.

The project includes:

- ✓ It has a 120 hp mill, a 200 hp granulating press and lubrication system.
- ✓ The project includes also the manufacturing and assembly of 4 conic hopper silos model 9.17/12 with a total capacity of 4.252 m<sup>3</sup>
- ✓ It includes a bulk load system and baling machine.
- ✓ Silos Córdoba has provided the full automation.

# Reference List

## 2009 | Constanza Romania

Plant conceived for the storage of wheat, barley, rape, corn, sunflower...

The total capacity of the plant is 218.960 m<sup>3</sup> for the storage of 164.000 T of cereal.

The project includes:

- ✓ 17 silos model 24.45/22 of 12.880 m<sup>3</sup> capacity each.
- ✓ Filling up is done at 1.200 T/h.



# Reference List

## 2009 | Alicorp Peru

Wheat processing and storage plant.

The total capacity of the plant is 37.504 m<sup>3</sup> for the storage of 28.128 T of cereal.

The project includes:

- ✓ 4 silos model 22.92/18 of 9.376 m<sup>3</sup> capacity each.
- ✓ Grain temperature monitoring systems.
- ✓ Filling up is done at 300 T/h and unloading at 150 T/h.



## 2012 | Dan Kazakhstan

Project conceived for the storage of wheat and barley.

The total capacity of the plant is 15.837 m<sup>3</sup> for the storage of 11.875 T of cereals.

The project includes:

- ✓ 3 silos model 18.33/16 of 5.279 m<sup>3</sup> capacity each.
- ✓ Loading and unloading is done at 120 T/h.
- ✓ The conveying machinery has been delivered by Silos Cordoba.
- ✓ It includes temperature monitoring system and ventilation.

# Reference List

## 2012 | Tiryaki Turkey

Project conceived for the storage of wheat and canola.

The total capacity of the plant is 250.168 m<sup>3</sup> for the storage of 200.000 T of cereal.

The project includes:

- ✓ 19 silos model 18.33/22 of 7.110 m<sup>3</sup> capacity each.
- ✓ 11 silos model 14.51/22 of 4.395 m<sup>3</sup> capacity each.
- ✓ 27 truck loading silos mod. 4.65/6 of 147 m<sup>3</sup> capacity each.
- ✓ 4 45° conic silos model 9.17/12 of 1.063 m<sup>3</sup> capacity each.
- ✓ The conveying machinery has been delivered by Silos Cordoba.
- ✓ Loading and unloading is done at 300 T/h.



# Reference List

## 2013 | Adunati Romania

Plant focused on the storage of wheat, corn, rape and sunflower.

The total capacity of the plant is 8.046 m<sup>3</sup> for the storage of 6.000 T of cereals.

The project includes:

- ✓ 6 silos model 12.22/9 of 1.341 m<sup>3</sup> capacity each.
- ✓ Dryer for maize model SCM 2-6 with a total capacity of 5 MT per hour able to reduce moisture content from 24% to 14%. Furnace use biomass.



## 2015 | Berte Qvarn Sweden

Plant conceived for the storage of wheat.

The total capacity of the plant is 12.300 m<sup>3</sup> for the storage of 9.200 T of cereals.

The project includes:

- ✓ 3 silos model 18.33 of 4.100 m<sup>3</sup> capacity each.
- ✓ The assembly of the silos has been performed by our own assembly team.

# Reference List

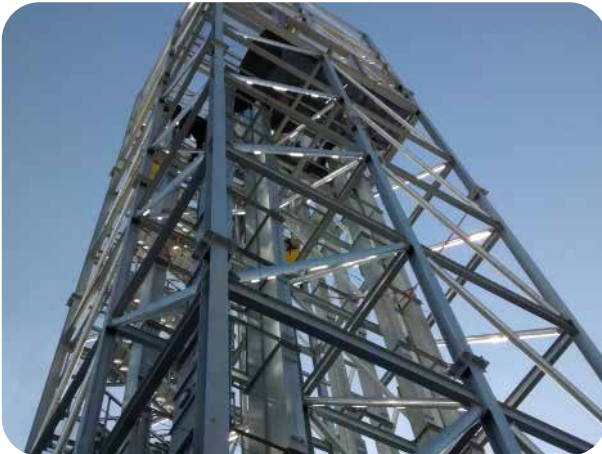
## 2015 | Obrinel Uruguay

Plant conceived for the storage of wheat at Montevideo Port.

The total capacity of the plant is 161.312 m<sup>3</sup> for the storage of 121.000 T of cereal.

The project includes:

- ✓ 12 silos model 27.50/17 of 13.083 m<sup>3</sup> capacity each.
- ✓ 1 hopper silo model 10.70/16 45° of 1.893 m<sup>3</sup> capacity each.
- ✓ 2 hopper silos model 5.35/6 60° of 194 m<sup>3</sup> capacity each.
- ✓ 2 hopper silos model 8.40/13 45° of 944 m<sup>3</sup> capacity each.
- ✓ 1 truck load silo model 4.65/6 60° of 147 m<sup>3</sup> capacity each.
- ✓ Central handling tower of 9,3 X 9,3 X 45m height.
- ✓ Secondary central handling tower of 9 X 7 X 28m height.
- ✓ Weighting area 12 X 6,5 m.
- ✓ Loading and unloading is done at 800 T/h.
- ✓ It includes as well a truck dumper platform, conveyors, bucket elevators and accesories.  
mecánicos.



# Reference List

## 2016 | Indeika Russia

Plant conceived for the storage of maize and wheat to provide the feed factory located at Tambov Region, Russia. The total capacity of the plant is 111.924 m<sup>3</sup> for the storage of 80.000 T of cereals.

The project includes:

- ✓ 6 silos model 32.08/16 of 17.237 m<sup>3</sup> capacity each.
- ✓ 4 silos model 9.17/12 45° of 1063 m<sup>3</sup> capacity each.
- ✓ 10 silos model 6.88/08 60° of 425 m<sup>3</sup> capacity each.
- ✓ Raw material reception by train and truck.
- ✓ Load is done at 200 T/h.
- ✓ Unload is done at 120 T/h.
- ✓ Pre-cleaners.
- ✓ Dryers.
- ✓ Filtration systems.



# Reference List

## 2017 | Irchenko Elevator Kazakhstan

This plant is conceived for the reception, storage and expedition of wheat.

The total capacity of the plant is 54.300 m<sup>3</sup> for the storage of 40.750 T of cereals.

The project includes:

- ✓ 8 silos model 22.92/12 of 6.500 m<sup>3</sup> capacity each.
- ✓ 4 silos model 6.88/6 60° of 352 m<sup>3</sup> capacity each.
- ✓ 2 silos model 6.11/9 60° of 360 m<sup>3</sup> capacity each.
- ✓ 2 silos train expedition modelo 4.65/3 60° of 88 m<sup>3</sup> capacity each.
- ✓ Hopper Silo.
- ✓ Reception, loading and unloading at 100 TPH.
- ✓ 2 receiving hopper for trucks and 1 receiving hopper for train.
- ✓ 2 pre-cleaning and cleaning lines, 2 drying lines.
- ✓ Elevator tower designed to have inside the cleaning system and 10 bucket elevators with plant dimensions of 9,5x16 meters and 31 meters high.
- ✓ 2 semiautomatic bagging system.





# Reference List

## 2019 | Tonkeris Kazakhstan

Expansion of Tonkeris facility, conceived for the storage of wheat, barley, rapeseed, flax and sunflower.

The total capacity of the plant is 43.882 m<sup>3</sup> for the storage of 33.000 T of cereals.

The project includes:

- ✓ 4 silos model 17.57/13 of 4.003 m<sup>3</sup> capacity each.
- ✓ 4 silos model 22.92/13 of 6.573 m<sup>3</sup> capacity each.
- ✓ 6 hopper silos model 5.35/9 (45°) of 263 m<sup>3</sup> capacity each.
- ✓ 4 hopper silos model 7.64/10 (60°) of 659 m<sup>3</sup> capacity each.
- ✓ 2 hopper silos model 1.85/2 (60°) for automatic weighing packer.
- ✓ Loading and unloading is done at 100 T/h.
- ✓ The conveying machinery – chain conveyors, belt conveyor, screw conveyors, bucket elevators – has been delivered by Silos Córdoba.
- ✓ Cereal sampling probe (DV company, made in Italy) supplied by Silos Córdoba.
- ✓ Grain analyzer Foss (Denmark).
- ✓ 2 units receiving pit for truck.
- ✓ Cleaning system consist of: rotatory drum cleaner 100 t/h, grain cleaner, aspiration and cyclone.
- ✓ 2 units vertical grain dryer machine 40 t/h.
- ✓ 2 bulk expeditions for train and also a third option for train expedition: 2 lines of packing grain in sacks including industrial automatic weighing packer and sewing machine.
- ✓ Electrical panel.
- ✓ Elevator tower 8×8, h=30 m.



# Reference List

## 2019 | Jusegal Spain

Installation of hopper silos reinforced and equipped with pneumatic loading.

The total capacity of the plant is 1.170 m<sup>3</sup> for the storage of 878 T of feed and wheat.

The project includes:

- ✓ 9 hopper silos model 3.50/9 65° with a capacity of 103.46 m<sup>3</sup> each.
- ✓ 3 hopper silos model 3.05/9 65° with a capacity of 79.76 m<sup>3</sup> each.
- ✓ Catwalks with access to all silos.



## 2017 | Capa Colonia Italy

First phase of plant conceived for the reception, storage and expedition of wheat.

The total capacity of the plant is 51.710 m<sup>3</sup> for the storage of 38.800 T of cereals.

The project includes:

- ✓ 6 silos model 20.63/20 of 6.811 m<sup>3</sup> capacity each.
- ✓ 1 hopper silo model 9.17/19 45° of 1.589 m<sup>3</sup> capacity each.
- ✓ 3 hopper silos model 4.58/3 60° of 85 m<sup>3</sup> capacity each.
- ✓ Handling equipment at 200 TPH designed for ATEX21 and ATEX22.
- ✓ Catwalks and supporting structures.
- ✓ Aspiration system.
- ✓ Cleaning system made up by drum sieve and sieve cleaning.

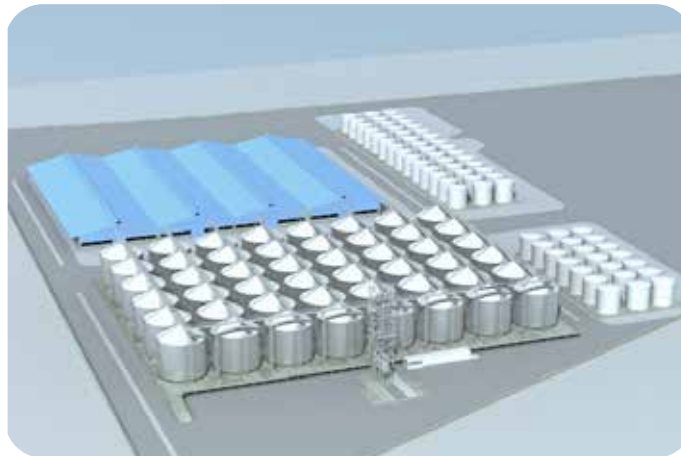


# Reference List

## Under construction | NKF Iran

Plant conceived for the storage of soya bean, corn and wheat.  
The total capacity of the plant is 489.792 m<sup>3</sup> for the storage of 367.000 T of cereal.  
The project includes:

- ✓ 48 silos model 24.45/17 of 10.204 m<sup>3</sup> capacity each.
- ✓ Intake conveying capacity: 1.200 T/h (600 T/h double).
- ✓ Discharge capacity: 800 T/h (400 T/h double).





**SCG Silos Grupo S.L.**  
Glorieta de las Tres Culturas Nr. 1, 4º A  
14011 - Cordoba - Spain  
T +34857 835 623

[info@siloscordoba.com](mailto:info@siloscordoba.com)  
[www.siloscordoba.com](http://www.siloscordoba.com)